

# MAGNIFICIDENT

**Lucky  
Draw**



Stand a chance to win the NEW  
5<sup>th</sup> Generation Premium LED Handpiece  
Only Purchases over R5,000 will qualify for the DRAW  
The More you Buy the higher the chance to WIN !!

FREE Delivery when Purchasing consumables over  
R2000

Send us your Quotation and we will Beat the price by 5%

Discount Applies to Certified Dealers who are VAT registered,

and conduct Business in South Africa .

The product should be Like for Like and the stock must have availability.

We reserve the right to limit quantities

T's and C's Apply



Price  
Busters



Our Prices Are Vat Inclusive  
Check before you buy !

**IMPORTANT  
NOTICE**

**DON'T GET  
FOOLED**



**We Supply VAT Invoices  
which Means you save !!**

# Portable Xray Combo



**First 5 Only !!**  
**Free Xray Apron**  
**Size One Sensor**  
**Valued @ R23900**  
**Free Back Scatter**  
**Radiation Shield**

**CRAZY**  
**DEAL**



**R49 900**

# Portable Xray Only



**First 5 Only !!  
Free  
Backscatter  
Radiation Shield**



**R23 900**

**CRAZY  
DEAL**

# HDR 500 – Size #1 High Quality IntraOral Xray Sensor

GET  
IT  
NOW



# CRAZY DEAL

**Includes :**  
**FREE Regular Single user  
version software  
&  
Free Sensor Positioner  
Kit**



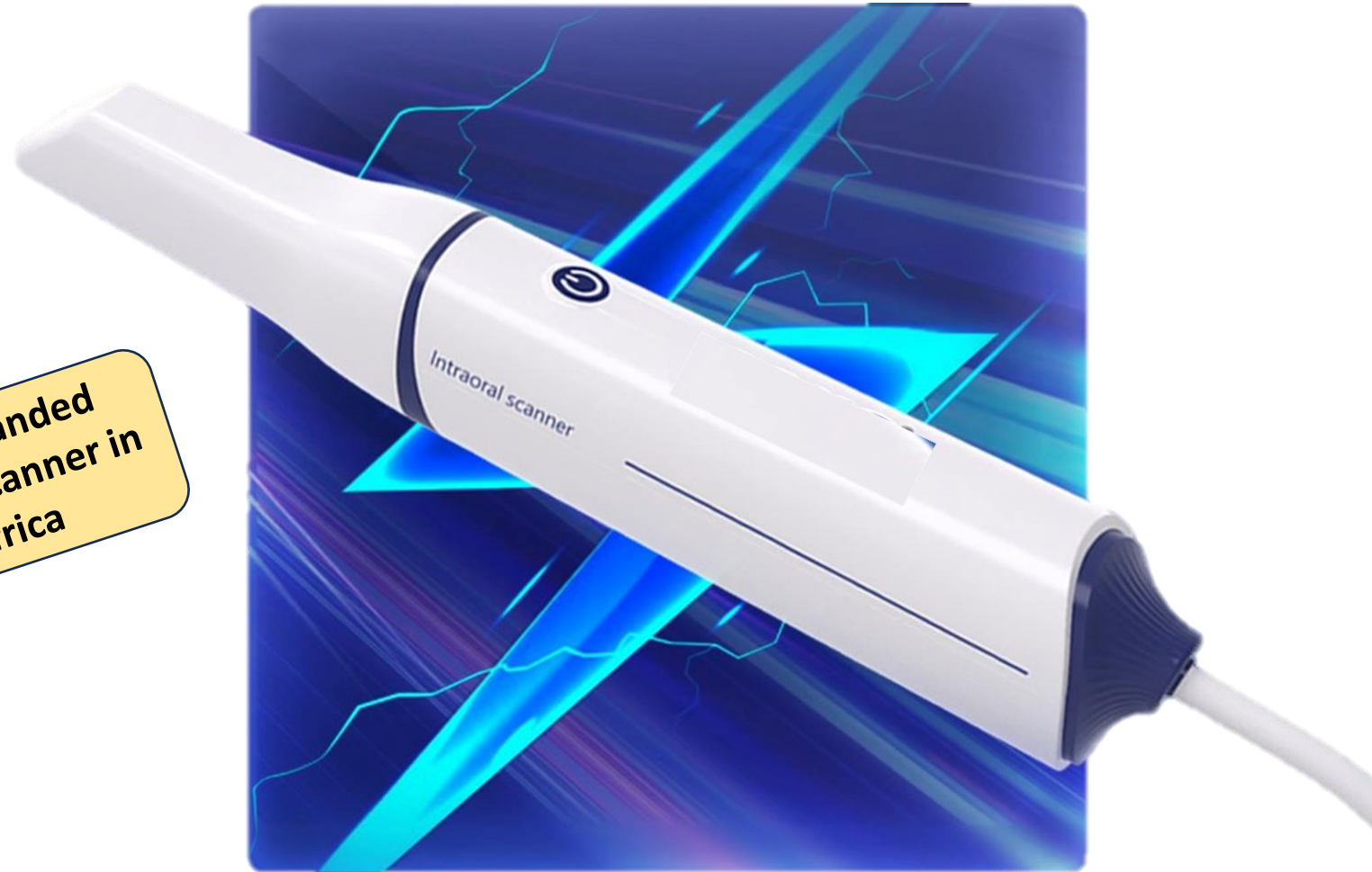
# R 23,900

Limited to the First 5 purchased  
Maximum One Per Customer  
Terms and Conditions Apply

# NEW LAUNCH

Jaw Scanning Time:30s  
Scanning Accuracy:10µm  
Camera Size:220\*36\*34mm  
Weight:180g  
Scan Head Size:  
Standard:20x17mm ;  
Mini:17x14.5mm  
Depth Of Field:0-18mm  
Light Source: LED  
Window Size:17x15mm  
Number Of Frames:30fps  
Scanning Software  
Output file as .stl or .obj  
Open System  
Implant Scanning available now too !!  
**GET YOURS BEFORE THE PRICE HOPS , SKIPS and JUMPS !!!**

**Cheapest , Branded  
3D IntraOral Scanner in  
South Africa**



**First 5 Only This MONTH pay**

**R 65,900**

# IntraOral3D scanner

**Now advanced with :**

- **Digital Dynamic Bite Registration Enabled !**
- **Orthodontic Simulation Enabled !**
- **Edentulous ridge Scanning for dentures Enabled !**



## AoralScan 3



**R169,900**

- Latest Version with NEW features !! **30% more Faster**
- Ergonomic Design –Modified Pen Grasp
- One Button Start / Stop or active Base recognition-lift to activate
- Adopts **AI Technology** – Smart Technology- cuts unnecessary data
- Auto recognition and elimination of tongue, fingers and mucosa
- 30% more Accurate over its competitors
- Special **Metal scanning ability** –ability to scan implant abutments
- Amazing scanning speed – less than 30s for the upper jaw
- Clinical Tool kit- Marking , undercut, bite registration
- Light weight of only 240g ,
- Scanner wand size : 281 x 33 x 46mm
- Highest resolution up to 10 um, 30fps video
- Ultra Low inlet height of only 14mm
- Impressive field depth of 21mm
- 5 Tips included for Adult and Kids
- Specifically designed for dental industry
- Super smooth Ultra-High-Speed imaging
- Realistic HD Colour
- Powder FREE scanning
- **Air mouse Function** – for Infection Control
- Natural Anti shake Technology
- Built in Anti-Fog Function
- Autoclavable Tips up to 100x
- Open format support for STL, PTY etc.
- Includes Scanning Software
- **Orthodontic Simulation**
- Generate QR code and share
- One License activation- **No Fees**
- 12-month Warranty
- Cloud Access platform on web server
- Click and send scans directly to LABs – Save Time and Delivery cost
- Parallel Import of the SHINING 3D IntraOral Scanner







•Paediatric scans



•Veneer scans



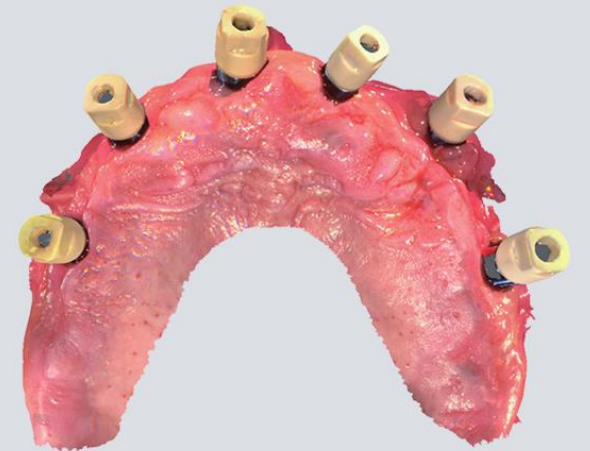
•Crown and Bridge scans



•Orthodontic scans



•Inlay Scans



•Implant scans

# COMBO DEAL: AIR POLISHER SYSTEM + NEW DESIGN STAND ALONE MOBILE DENTAL UNIT ON CASTORS WITH BUILT-IN COMPRESSOR

Periodontal  
Air Polisher System  
PT MASTER  
With  
Wireless Foot Control



**Individual Price : R39 900**

**+2x Handpieces, Scaler Tips, Abrasive Powder & Wireless Foot Control**

Ultrasonic Scaling  
Implant and Ortho Maintenance  
Minimally invasive Restorations  
Perio/ Endo Treatments  
Air Polishing and Abrasion

**NEW  
PRODUCTS**

**COMBO  
OFFER!**

**R79,900**



**Individual Price : R44 900**

**Built-in Led Scaler & Curing Light**

**Optional Extras FREE With Deal**  
Auxiliary Air/Water Quick Connector  
Auxiliary Air/Water Valve  
Auxiliary Built In Power Socket  
Internal Spray Contra Angle

**First 3 Customers Receive FREE LED Handpiece and Slow Set (valued @ R6000)**

# AIR POLISHER SYSTEM



Supragingival Cleaning  
Interdental Space Cleaning  
Subgingival Cleaning  
Orthodontic brackets Cleaning  
Air polishing after Scaling  
Preparation to bond Ortho Brackets  
Implant and Abutment Cleaning  
Stain Removal and Smoothing  
Preparation for Bleaching  
Tongue and palate Cleansing  
Versatile



**SIMILAR TO i-JET  
+ FREE 2 x400G  
POWDER  
(VALUED AT R 1800)**

Prophy Jet is a must-have device in every dental office due to its wide application and benefits in dentistry. The device is versatile, efficient, and gentle, and provides a comfortable experience for the patient. Investing in a Prophy Jet will not only improve the quality of dental care provided but also save time for both the dentist and the patient. The device is also an excellent investment in the long-term oral health of patients. Dental professionals should consider adding the Prophy Jet to their arsenal of tools to provide the best possible care to their patients.

**R3,900**

# DENTEX®

# PROMO!

## Bonding Liquid

**SPECIAL OFFER**

# R399

Max 2 per customer



BOND V dental adhesive is a single component for total etch technology. It can be used widely in dental clinic for all direct and indirect restorations. It also works well for enamel with total etching technique

## Porcelain Fracture Repair Kit

Fix PFM fractures and chips , As well As Zirconium and Veneers



**SPECIAL OFFER**

# R1,999

Max 1 per customer

Limited Stock , Get yours before they All Gone



## UNIVERSAL LIGHT CURING DENTAL RESIN

Direct restoration for all class caries.

Restoration of teeth defect and veneer.

Package:

Light Cure Composite: 4g/Syringe\*5

(A1 A2 A3 A3.5 B1)

Syringe Needles : 5pcs/ box\*1

Total Etching Adhesive: 5ml/Bottle\*1

Etching Gel: 5ml/Syringe\*1

Applicators Brushes: 20pcs/box\*1

Net weight: 188.4g

# R2,199

Max 1 per customer





Ideal for direct Composit Veneers

Description:

INDICATIONS FOR USE:

Direct restoration for all class caries.

Restoration of teeth defect and veneer.

Package:

Light Cure Composite: 4g/Syringe\*

COLOUR: EA1,EA2,EA3, DA2,DA3,CL

Syringe Needles : 5pcs/ box\*1

Total Etching Adhesive: 5ml/Bottle\*1

Etching Gel: 5ml/Syringe\*1

Applicators Brushes: 20pcs/box\*1

Net weight: 188.4g



**R2,799**  
Max 1 per customer





Buy Both UNIVERSAL AND ENAMEL COMPOSITE RESIN KITS AND GET A  
The 10 Pc TEFLON COATED COMPOSITE BUILD UP INSTRUMENT KIT FOR



**R699**

Max 1 per customer

## NANOFILL UNIQUE

### Unique Single Shaded Universal Composite

Nanofill unique is a universal micro-hybrid composite for direct and indirect restorations (inlays, onlays, veneers) as well as fillings of cavity class I-V. All classic vita-shades are covered thanks to the chameleon-effect of Nanofill unique. A translucency of 8% allows excellent shade matching of the restoration to the natural tooth shade of the adjacent tooth structure. Nanofill unique combines top aesthetics and good handling. It is characterized by easy modeling and optimal adaptation to the cavity walls. Highest polishability gives the finished restoration a perfect gloss. Excellent physical properties guarantee long-lasting restorations.. Surplus stock for slow turning colors is minimized, in addition to reduction of inventory. Nanofill unique enables efficient working: elimination of color definition and reduction of errors due to incorrect color selection

Compares to OmniChroma®



Available as 4g syringe



Made in Germany

**R499**

Max 2 per customer

The entire color spectrum is covered with one syringe !!



# SOLASE Laser Limit-less **S**MART



## SOLASE Dental Diode Laser



All Attachments optional Extra !

**LAZON**  
LAZON Medical Laser

**CRAZY  
DEAL**

**LAZON**  
LAZON Medical Laser

**R 79,900**

Excludes Phone

Includes:

- Wireless Foot control
- Laser Handpiece Attachment

- SELF-LEARNING
- PATIENT RECORD
- MULTI ACCOUNT
- CLOUD BACK UP
- APP UPDATING
- CUSTOM PRESETS
- OFFLINE MODE
- SMART TIP INITIATION

**DON'T  
MISS  
OUT!**

From  
**R 99,900**  
 Standard Kit with the Surgical Handpiece  
 and 15 FREE Tips

### Solase PRO 3-in-1

- Wavelength & Max. Power
- 450nm: 3W@CW, 5W@pulse
- 650nm: 400mW@CW
- 810nm: 6W@CW, 9W@pulse
- 980nm: 8W@CW, 12W@pulse

**NEW PRODUCTS**



# New Design



**CLEAR DENTAL SALIVA EJECTORS  
WITH REMOVABLE BLUE TIPS  
(100'S)**

**No Maximum**

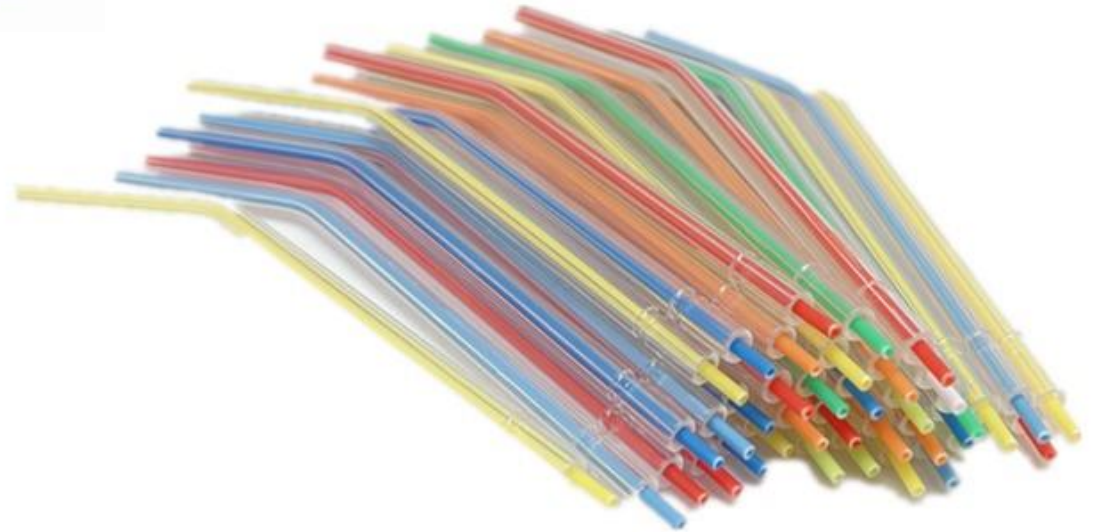


**R49.90**



**DISPOSABLE 3-IN-1 SYRINGE TIPS  
MULTICOLOUR (Packs Of 250pcs)**

**No Maximum**



**R499**

# Anaesthesia

## Oral Anesthesia Injector



**ANXIETY**  
UNINSTALLING...

**R4,990**

Metric and Imperial  
Needle Connection

Get A Free Box of  
100 x 1.8ml Xylotox  
Local Anesthetics



New Computer Controlled Anaesthetic Pen  
Anxiety Beating / Stress Free Treatment

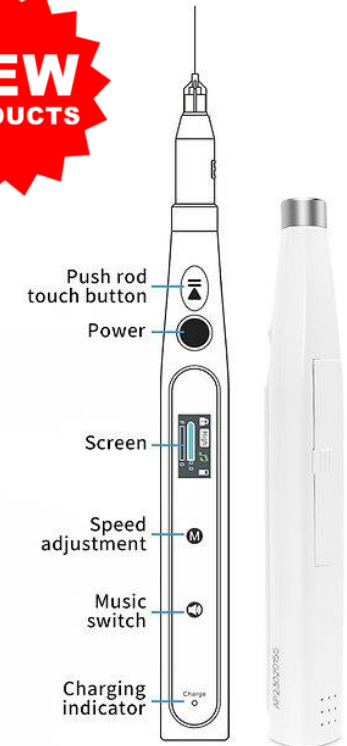
**NEW  
PRODUCTS**

Screen:



1. Lock screen symbol
2. Speed adjustment
3. Music switch
4. Battery indicator
5. Injection dosage
6. Dynamic pressure feedback

Battery charging:



Now with Music option , Audible Chime and Voice activated dispensing prompt  
Be that Dr. with the latest and most modern equipment, Your patient will love it and Praise you !!

## PORTABLE DEALS #1

## First 3 Customers

## PORTABLE DEALS #2

### ALUMINIUM CASE 6 HOLDER + PORTABLE DENTAL CHAIR

New Upgraded Portable Unit  
+ Built In Curing Light,  
+ Built in Scaler & Saliva  
Ejector



# R39,900

Free Myricko Fast Handpiece and Free Slow Set (Value R5000)

### Optional



**Includes :**  
Chair Mounted Light  
Chair Mounted Table  
Chair Mounted Spittoon  
Chair Mounted Delivery System With :  
3-in-1 Syringe  
3 X 4 Hole Air Tubing  
Clean Water System  
Auto Selection Activation  
Gauges And Adjustment Valves



# R35,900

Free Myricko Fast Handpiece and Free Slow Set (Value R5000)

## PORTABLE DEALS #3

Purchase the Mobile Suction With  
Reservoir Or Spittoon and Mobile  
Integrated Dental Unit  
& Receive a FREE Portable Dental Chair  
(Foldable) + Light

# R79,900

Excluding Handpieces



CONVENIENTLY FOLDS UP FOR  
EASY TRANSPORTATION

# Military Portable Unit 6 Holder

**CRAZY  
DEAL**

**R39900**

Built in LED Curing Light and LED Scaler  
FREE Fast Turbine Handpiece - 5<sup>th</sup> Generation

**CRAZY  
DEAL**



Purchase with Portable Dental Chair, Dental Stool,  
Spittoon and Examination Light  
For R49,900

And receive the Heavy Duty Carrier Bag  
And 1x High Speed LED Turbine and Slow Set for FREE!

Disposable Anti-Fog Suction Mirror  
+ 100 pcs disposable mirror



**R1,499**

Photo  
Anti-Fogger  
Mirror



**R1,799**

Photography  
Mirror  
Intra Oral  
Double-Sided



**R1,299**

Examination  
Mirror  
Rhodium Coated  
Paralello meter

Available as  
Round

FREE  
HANDLE  
Value R199



**R399**

Examination Mirror  
Rhodium Coated

Plain Mirror **R299**  
Paralello meter **R499**

FREE  
Handle  
Value R199

Available as  
Rectangular



Examination Mirror  
Regular

**R59**

Examination Mirror  
Rhodium Coated

**R99**

Examination Mirror  
Rhodium Coated and  
Magnified

**R159**



# The BOSS of handpieces has ARRIVED !

## New 5<sup>th</sup> Generation 6LED Premium Shadowless Fast Turbine Handpiece

- Latest High Performance LED Handpiece
- 6 LED Shadowless Light Projection
- 6 Spray Nozzles
- High Torque with Excellent cutting efficiency
- Light and comfortable
- Reinforced Body and casing
- Strong Ceramic Bearings
- AAA Quality
- Affordable and Value for Money
- 6 Month Warranty

**YIPPEE!**

- For All OUR LOYAL CUSTOMERS
- Get **50%** discount when Trading your OLD 3<sup>rd</sup> Generation in for the 5<sup>th</sup> Generation  
T's and C's Apply, FREE Collection , Limited to 3 Handpieces

**NEW**  
**ARRIVAL**

*The Workhorse of the Dental Surgery*



- Get 1x Free 550ml Oil , 1x FREE Matrix Kit,  
1x FREE Delivery

**OR**

**Now only : R3990**



# PREMIUM HANDPIECE PROMO SPECIAL #1

## PURCHASE 3 X FAST TURBINE 3<sup>rd</sup> GEN LED

### AND GET 1x Slow Set FREE + 3x Matrix Kits + 3x OIL FREE



**R8,999**

\*3 month warranty



**Contra Angle**  
available as latch type ONLY!  
5 packs Prophy Brushes Free  
Mix and Match the shape



**3 Free Matrix Kits**



**3 Free OIL**

**HANDPIECE PROMO SPECIAL LIMITED TO 1 SPECIAL PER CUSTOMER- FIRST 5 CUSTOMERS ONLY**

# PREMIUM HANDPIECE PROMO SPECIAL #2

## PURCHASE 1 X FAST TURBINE 3<sup>rd</sup> GEN LED

### AND GET 1x Slow Set FREE + 1x OIL FREE



**R4,599**

\*3 month warranty

=



+



**Contra Angle available as latch type ONLY !**  
**2 xFREE Packs Propy Brushes included**

**1 Free OIL**

**HANDPIECE PROMO SPECIAL LIMITED TO 1 SPECIAL PER CUSTOMER- FIRST 5 CUSTOMERS ONLY**

## Xray Sensor Sleeves



**R599,90**

Jumbo Pack, 500 pcs  
Limited to 3 per  
Customer/Practice  
Price valid on delivery Orders  
Only- No collections

## Slow Set Handpiece Kit



**R1,999**

Limited DEAL to 1 per Customer,  
first 10 Sales Only !!  
Latch Type Only  
Price valid on delivery Orders  
Only- No collections

## Dental Prophyl Brushes



**R49**

Cup Shaped /  
Flat Shaped  
Multicolour  
Animal Free  
Pkts of 12pcs



**R39**

Max 10pkts  
Each type

# Caries at a glance

*A tool to achieve your treatment goals!*

Red: Carious plaque

Real-time detection of carious tissue

Green: Enamel

**CRAZY DEAL**

Now Available with FREE OIL

Fast handpiece with caries Detection function .

## Features of Caries Detection Handpiece :

- Ceramic bearings
- 8 cooling jets
- 4 water cooling , 4 air cooling
- 4 hole attachment to Midwest tubing
- NSK Type Quick Connector



# Curing Lights

Max 1 per customer  
First 5 Customers on each

## SWAN 1sec Curing Light - Broad Spectrum Led - Premium Exclusive

- Constant Current Drive
- Wireless
- Dual Intensity Mode
- Hygienic
- Broad Spectrum Led-  
Wavelength 385nm - 515nm

### Features:

#### Dual intensity mode:

•P1 High intensity mode  
Constant intensity: 2300-  
2500mw/cm<sup>2</sup>

#### •P2 General intensity mode

Constant intensity: 1000-  
1200mw/cm<sup>2</sup>

#### Broad-spectrum : Curing most materials

Ability to cure CQ and now also  
TPO and new photoinitiators in the  
latest Composite resins.

**R4,999** Max 1 per customer  
First 5 Customers



## Max cure 9 Wireless Curing Light 2000 MW/cm<sup>3</sup>

**NEW  
PRODUCTS**

Light power more than 2000mw/cm<sup>2</sup>.  
3 Distinct Modes: Strong, Flashing,  
Gradually strong.  
2600 mAh Large-capacity lithium battery.  
5W Big power LED.  
Full charging available use more than 200  
times.  
Automatic Standby/Automatic shutdown.

**R2,299**



## Maxcure 5 Wireless Curing Light 1800 MW/cm<sup>3</sup>

Power Input: 100-240VAC, 50Hz/60Hz  
Power Output: 5V DC/1A  
Wave length: 420 nm-480 nm  
Light intensity: 1000mW/cm<sup>2</sup> – 1800mW/cm<sup>2</sup>  
Battery voltage and capacity: 3.6V/2600mAh  
Battery model ICR 18650-2600mAh

**R2,199**

**NEW  
PRODUCTS**



## Curing Light Promo

High Power  
1s or 5s  
Tips included:  
Orange tip-carries  
Green Tip – Fracture  
Spot Cure  
Long tip Cure and  
various other tips  
Magnetic attachment  
to the head

**R1,899**



## Curing Light Promo

Magnificent Branded

- High Power
- 1s or 5s
- Vibration feedback
- Metal Housing
- Metal Base
- Limited Edition Black

**R1,699**

Max 1 per customer  
First 5 Customers



# Curing Lights

## X-Cure pro

Curing light

**R1,499**



### 1 Sec Curing Light

Turbo Mode 1s, 3s

Full Mode 3s, 5s, 10s

Ramp Mode 3s, 5s, 10s

Pulse Mode 3s, 5s, 10s



Max 1 per customer  
First 10 Customers  
Delivered Orders Only !  
You Snooze , You Lose !!



# Dental Ergonomic Refractive Loupes

## Premium 48° - 5X Magnification



Grand Launching Offer



- Premium Quality Edition
- 5X Magnification
- 48° Degree
- Keep Posture , Eliminate Back/Neck Pain
- Includes Light Pack With Filter Option
- Up-flip Design Quick Reset Easy Up-flip Non-abrasive Vision And Patient Communication More Convenient
- Asynchronous Pupil Distance Adjustment Reduces Eye Fatigue
- The Left And Right Glandular Distance Of The 48° Magnifying Glass Can Be Individually Adjusted To Help Better Guide The Eyes, Making The Eye Position More Natural, Increasing The Doctor's Comfort And Reducing Eye Fatigue Caused By Long Surgery
- Pupil Height Can Be Adjusted At Will
- Variable Pupil Height Ensures That There Are No Shadows In The Ocular Field Of View

# R19900

- Incl Refractive Loupes and LED Rechargeable Lamp

## DISPOSABLE CHEEK RETRACTORS



**R49.90**  
Single Packs

- Latex Free
- Allows Lips and cheeks to be fully Isolated
- Flexible and comfortable
- Single Use
- Medium Size
- Available as 20pcs per box

**R799.90**  
Packs of 20pcs



Buy A Box and save 20%

## DENTAL NOLA DRY FIELD CHEEK/LIP RETRACTOR SUCTION SYSTEM



Used In Various Oral Treatment Scenarios Such As Pit And Fissure Sealants, Posterior Restorations, Bonding Ortho Brackets, Teeth Bleaching / Whitening

- Dry Field System keeps the mouth dry while isolating arches from tongue and cheeks.
- High-heat plastic and silicone construction autoclavable to 135 degrees
- Great for sealants, ortho bonding, and posterior restorations
- Combined into each appliance is an adjustable cheek retractor, saliva ejector, tongue guard and low-volume suction connection.
- Specially designed not to cover occlusal surfaces of the teeth.

**R899,90** •Launch Offer –  
•Max 2 per Customer



# Rubber Dam Promo Deal

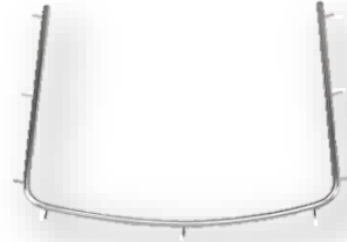
Buy the Rubber Dam Kit and  
Receive the Box of Rubber Dam Material for FREE

**RUBBER DAM CLAMPS x 6**

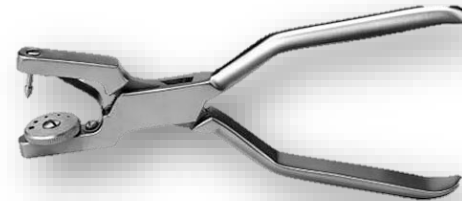


2x Anterior  
2x premolar  
and 2x molars

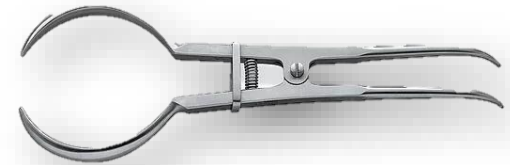
**RUBBER DAM FRAME x 2**



**RUBBER DAM PUNCH**



**RUBBER DAM CLAMP  
HOLDER**



# R2599

Available as :  
5 x 5 in BLUE (52 sheets) or  
Available also in 6 x 6 in GREEN (36 sheets)

Max 1 per Customer , 1<sup>st</sup> 10 Customers Only



# Tooth Shade Selector / Colour Comparator

1. Fast and reliable shade taking at the push of button.
2. High measuring accuracy depends on spectrophotometric measuring.
3. Perfectly simple handling
4. Cordless, mobile and lightweight compact unit.
5. Better results since independent of lighting conditions and user.
6. Suitable for VITA PLAN(V16) and VITA 3D-MASTER(V29), shade guider board
7. Quality control depends on best micro-computer and self-restorable system.

**NEW**

**ARRIVAL**

Grand Launching Offer

**R19,900**

**NEW**

**Tooth color comparator**



# Xray Positioner Kits

**NEW  
PRODUCTS**



- Aligns film to prevent cone cutting
- Rounded bite blocks with no sharp edges improve comfort.
- Open bite block design offers patients a soft bite
- New bitewing shape with same-arch biting for a more closed bite

**R1999**



- Excellent Sensor Protection, For digital sensor with line  
The clamp size can be adjusted for different imaging plates
- 1, (Green) For right maxillary upper premolar/molar and left mandibular
  - 2, (Blue) For left maxillary premolar and right mandibular premolar/molar
  - 3, (Yellow) For maxillary/ mandibular incisor -Anterior teeth

**R 1299**

### Twin Lights Oral Photography



Use with your  
cellphone

**R999**

### IntraOral Photography Contrast Kit



**R1,499**

### IntraOral Photography Mirror Kit



**R999**

### RING Light Oral Photography



Now with Macro Lens  
And Polaroid Filter  
Use with your cellphone

**R1,999**

### Black Contrast Cheek Retractor Twin Size



**R480** Sold as Pair

### Anti – Fogging Mirror Kit with Mirror Attachments



**R1,599**

### Black Contrast Twin Lip Retractor



**R280**  
Small or Large

### Black Contrast Front Lip Retractor



**R380**  
Sold as Pair Small or Large

**Intra Oral Camera System with  
17" Monitor + 12 MP Camera**



**R13,900**

1. Upgraded Wi-Fi + 17inch Monitor
2. 1/4 CMOS high resolution 12MP intraoral camera
3. Built-in 4pcs high brightness long-life white LEDs
4. Intergrated image software and with dentist management software



**Intra Oral Camera System With Integrated Computer  
Touch Screen + I5 Integrated Computer + HD Camera**

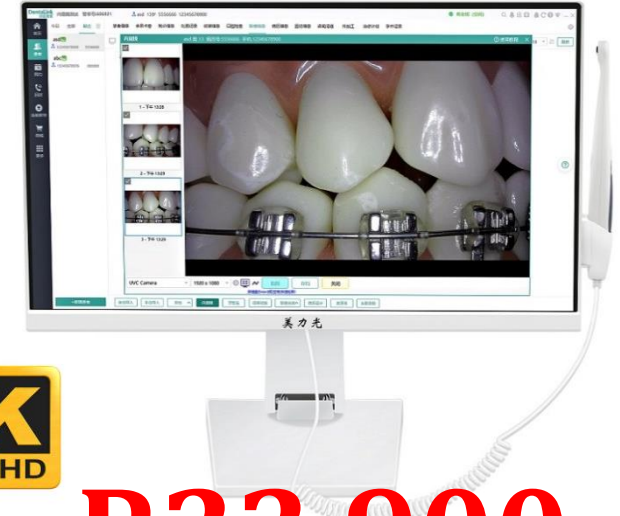


**720p  
HD**

**R19,900**

1. Upgraded Wi-Fi + 23-inch touch computer screen all-in-one , can be operated by finger directly, or onscreen keyboard
  2. 1/4 CMOS high resolution 720p intraoral camera, high performance
  3. Built-in 4pcs high brightness long-life white LEDs
  4. Dentist management software
- 23-inch HD touch screen WIN10 32-bit flagship edition  
processor Intel Core i5 CPU installation memory (RAM)8GB/128G  
solid state disk 32-bit operating system built-in Wi-Fi  
Optional Wireless Mouse and Wireless Keyboard

**Intra Oral Camera System With Integrated  
Computer Touch Screen + I5 Integrated Computer  
+ 4K Camera With Smart Auto Focus**



**4K  
ULTRAHD**

**R22,900**

1. Upgraded Wi-Fi + 23.8-inch touch computer screen all-in-one , can be operated by finger directly, or onscreen keyboard
  2. 1/4 CMOS high resolution 1080p intraoral camera, high performance and auto focus.
  3. Built-in 6pcs high brightness long-life white LEDs
  4. Running 3D image software and with dentist management software
- 23.8-inch HD touch screen WIN10 64-bit edition  
processor Intel Core i5 CPU installation memory  
(RAM)8GB/128GB solid state disk 64-bit operating system  
built-in wireless network card Cable socket +HDMI+VGA+USB

**FREE OFFER:**

**Receive Free Intraoral Monitor Arm To Attach To Dental Chair**

# Implant UV Activator



## New Product Launch

It can use vacuum ultraviolet rays to catalyze and activate the surface activity of implants

- Improve the rate of osseointegration
- Shorten the time of bone healing
- Accelerate the clinical osseointegration of dental implants and improve the success rate of dental implants.
- Improve bone contact rate(BCR)
- The BCR of Non-activated implants is about 50-60% and activated implants can increase to over90%
- Shorten dental restoration time
- Dental restoration time: Reduced from 3 months to 1 month
- Expanding implant adaptation
- Improved implant success rate for high-risk dental treatment
- Rapid activation - Activation only takes 10s
- Ozone sterilization Built-in ozone filtration to prevent leakage
- Vacuum UV
- Ultra High Implant Compatibility (S, L, M1.4, M1.6, M2.0)

R49,900

# Implant Stability Meter

Grand Launching Offer

It is a stability measuring device that uses tapping method, which measures the time of the Tapping Rod of the device contacting the implant. Used for for dentistry and dental implantology or oral cavity, or abutment, to measure the stability .

The result of the measurement is displayed in iST scale (implant Stability Test), which is the numerical representation of the Implant Stability Test (iST) value, and higher scale represents greater implant stability or lower implant mobility.

## Characteristics

Convenient usage due to small and light design

Easy to use due to simple controlling method

Fast measuring time less than 3 seconds

Safe measurement due to slight tapping technique and auto safety system (tapping stops after tapping twice when Osseointegration is unstable, otherwise taps up to 6 times.)

Available to check possibility of implant failure at in earlier stages

**This model is much simpler to use than the NSK model. With the NSK model, you need to install a probe on the implant first. With this model, you can see the ISQ value on the display screen by gently tapping the implant. From the numerical value Determine the stability of the implant.**

## Implant Stability Meter New Product Launch

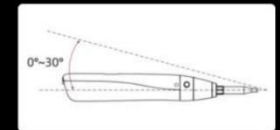
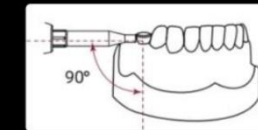


R23,900

## 2-step procedure



1. Carefully position the tip of the Tapping Rod to the upper edge of the healing abutment while being cautious not to push the abutment. When the Tapping Rod of the handpiece is located 90 degree from the side part of the top of the healing abutment and the ON/OFF switch is pressed once, the tapping motion starts after 0.5 second.



Remarks: The measured stability value is more accurate when the degree between the healing abutment and the Front Guide is closer to 90 degree. Maintain the contact angle within the range of 0° ~ 30° to upward when measuring. Due to the different bone widths in different directions of the implant, the measurement data will be biased. Try to measure the stability value from multiple angles to get a reasonable value.

2. An ISQ value is generated and shown on the LCD display. This reflects the level of stability on the universal ISQ scale -from 1 to 99. The higher the ISQ value, the more stable the implant.



If ISQ value appears as Red (01 to 59), the stability is not up to the standard.

If ISQ value appears as Yellow (60 to 64), the stability reaches the benchmark value.

If ISQ value appears as Green (65 to 99), the stability is good.

Remarks: Number of tapping: Tap 2 times until the measured value of 1-59. After 60-99, the device taps 6 times in order to measure the stability.

# Implant Locator



**R10,900**

- Handy Piece of equipment in Implant Dentistry
- Especially for 2 stage dental implant Surgery
- Can have a minimal invasive uncovering of the implant with the Locator
- No more Guess Work !
- Work faster , easier , simpler and smarter !!



# Price



We Cutting Prices – Rock Bottom !  
Cheapest in SA Guaranteed !!



## Super Suction Deals

Semi – Wet Suctions  
High Quality and Efficiency  
Built in Air/Water Separator  
No extra tank required  
12 month Warranty  
Cost Effective . Affordable Solution



### JW-X01- 1 Chair

Voltage (V): 220  
Frequency (Hz): 50/60  
Power (W): 400/500  
Max Pumping (l/min): 800  
Vacuum: -110  
Net/Gross(kg) : 18/20  
Size (mm) : 310\*450\*590  
Noise (dB) : 53

**R 17,900**

### JW-Y01- 1/2 Chair

Voltage (V): 220  
Frequency (Hz): 50/60  
Power (W): 700/800  
Max Pumping (l/min): 1000  
Vacuum: -130  
Net/Gross(kg) : 25/30  
Size (mm) : 310\*450\*635  
Noise (dB) : 53

**R 22,900**

### JW-X03- 3/4 Chair

Voltage (V): 220  
Frequency (Hz): 50/60  
Power (W): 940  
Max Pumping (l/min): 1500  
Vacuum: -150  
Net/Gross(kg) : 36/44  
Size (mm) : 385\*485\*615  
Noise (dB) : 57-62

**R 29,900**

### JW-W03- 4/5 Chair

Voltage (V): 220  
Frequency (Hz): 50/60  
Power (W): 1100  
Max Pumping (l/min): 1800  
Vacuum: -200  
Net/Gross(kg) : 38/46  
Size (mm) : 385\*485\*615  
Noise (dB) : 58-62

**R 39,900**

# Stainless Steel Cassette + 10 Hand Instruments



## 12 Pc Set

- 1 x Mirror Handle
- 1 x Mirror Head (reg)
- 1 x Explorer
- 1 x Perio Probe
- 1 x Thymosin
- 1 x Ball Burnisher
- 1 x Cord Packer
- 1 x Mixing spatula
- 1 x Excavator
- 1 x Plugger
- 1 x Gingival Margin Trimmer
- 1 x Stainless Steel Cassette



# R999

Max 1 per customer  
1<sup>st</sup> 5 customers Only !

# CRAZY DEAL

Dental Syringe  
Hinge Type  
High Quality



**R 299**

Max 3 per customer



**R 399**

Max 3 per customer

**STOCK  
CLEARANCE  
Sale**

Gen III Fast  
Turbine  
6 Spray  
Handpiece  
with  
LED  
+ Free Oil



**R 2499**

Max 3 per customer

Latch or  
Push  
Button



**R 999**

Max 2 per customer



**R1,999**

Max 1 per customer

Porcelain Polishing Kit



**R 399**

Max 3 per customer

Composite Polishing Kit



**R 399**

Max 3 per customer



**R 1699**

Max 2 per customer  
Free Oil

**550ml**  
Handpiece  
Lubrication  
Spray



**R 399**

Pulse  
Oximeter



**R299**

Max 3 per customer

Matrix band Kit



**R299**

Max 3 per customer

Plastic  
Overshoe  
Dispenser  
with 100  
FREE Plastic  
Overshoes



**R599**

Max 3 per customer

Premium Face Shield



**R 69**

Max 20 per customer

Buy the Face Shield  
and get 50 Masks  
FREE

**CRAZY  
DEAL**

**CHEAPEST PREMIUM MULTI LAYERED Re-Useable DIAMOND BURS**

**R99,90 – Max. 10 pks**

BC-31



BR-31



BR-41



F012



FO-29



FO-32



EX-21EF



SI-48



SI-47



SI-46



SR-11EF



**We are the Cheapest for this QUALITY product in SOUTH AFRICA –Beat it at 5% off !!**

**WE WIN HANDS DOWN-MAXIMUM 2 OF THE SAME PACK SHAPED BURS PER DEAL !!!**

TC-10



TC-21



TF-11



TF-12



TR-11



TR-12



TR-12F



TR-13



WR-13C



WR-13



# TUNGSTEN CARBIDE BURS

PRICED IN PACKS OF 5 PCS

FG2



R299

FG4



R299

FG56



R199

FG330



R199

FG557



R199

FG1158



R199

FG1931



R339

FG1958



R339

FG2058



R339

FG7204



R359

FG7406



R359

FG7901



R359

FGXL4



R299

FGXL557



R299

HP6



R239

HP35



R239

HP700



R239

RA2



R299

RA4



R329

RA8



R359

RA557



R229

RAXL2



R299

RAXL4



R299

**CROWN CUTTING BURS MULTI-LAYERED-  
FOR EXCELLENT CROWN PREPS**



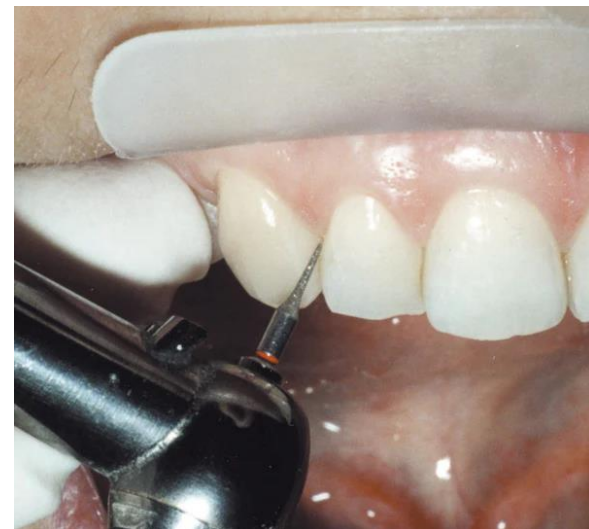
**MULTI-LAYERED INTERDENTAL  
STRIPPING BURS**



SR-11c  
(Course)



F0-21c  
(Course)



ORTHODONTIC  
WIZARD !!

**DON'T  
MISS  
OUT!**

**R399** *Prep Like  
a Boss!*  
Pack of 5 Pcs

**R799**  
Pack of 5 Pcs

**High Quality Premium Multi-layered  
Re-useable Diamond Burs**



**Diamond Burs - 392-016F Inter  
Dental Stripping Bur**

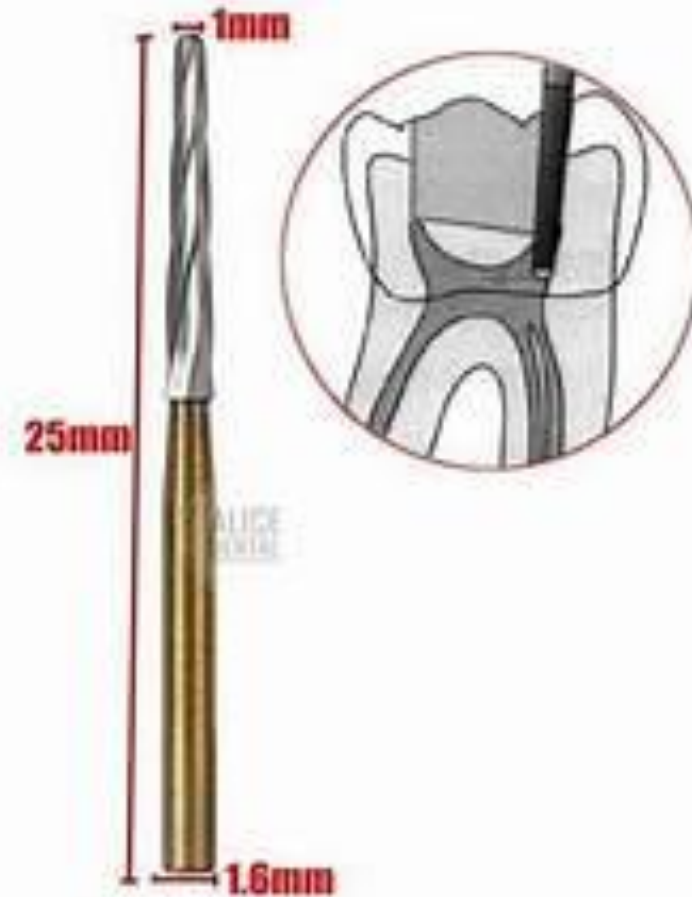
New Product !!  
Carbide Bur FG-152XL  
Endo Z – 25mm  
Gold

Used in Endo –  
Pulpal Floor Protection



152

**R499** (5pcs)



High Quality Carbide Burs



- Fig #1 Upper Anterior Forcep
- Fig #7 Upper Premolar Forcep
- Fig #18 Upper Left Molar Forcep
- Fig #17 Upper Right Molar Forcep
- Fig #51 Upper Root Forcep
- Fig #22 Lower Molar Forcep
- Fig #13 Lower Premolar Forcep
- Fig #33 Lower Anterior Forcep
- Fig #67 Upper Wisdom Tooth Forcep
- Fig #79 Lower Wisdom Tooth Forcep

**R 2,299**



- Fig #560 Upper Incisor Forcep
- Fig #561 Upper Molar Forcep
- Fig #563 Lower Molar Forcep
- Fig #564 Upper Root Forcep
- Fig #567 Lower Root Forcep
- Fig #566 Upper Molar Forcep Small
- Fig #565 Lower Incisor Forcep

**R 1,799**

# Purchase Adults & Kids Forcep Kit

**R3,499**

**Price is for both complete  
Adult and Kids forcep kit**

**Max 1 set Per Customer**

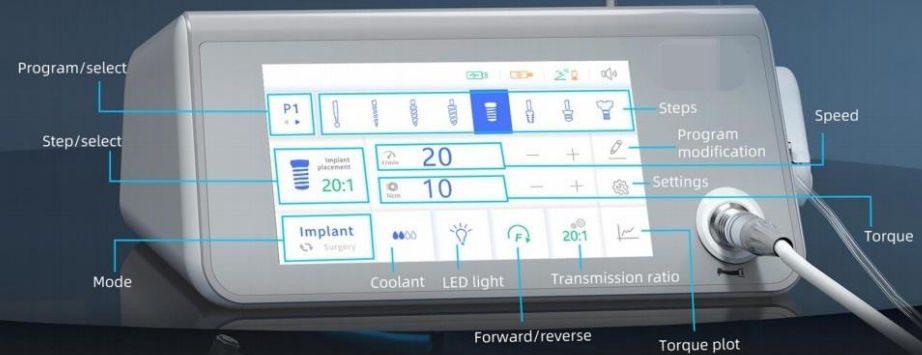
**Limited to 1<sup>st</sup>  
3 customers**



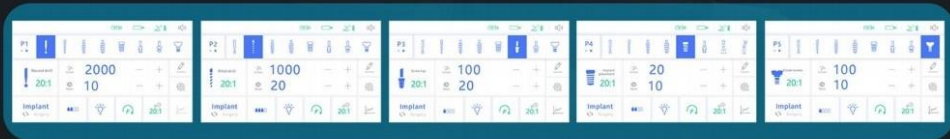
# Implant mode & Surgery mode 2 in 1

## •Implant mode

12 Optional steps,  
help you create your own planting process



5 Memorized Programs  
Dentists can set 5 programs with different data



## •Surgery mode

8 Different programs, meet all your need



# DELUXE Electric Motor



**R44,900**

Max 1 per customer  
First 3 Customers

**Free Handpieces**  
1 X 1:5 Angled Red-Ring Fast Handpiece  
1 X 1:4.2 Angled Red-Ring Fast Handpiece  
1 X 20: 1 Contra-Angle Implant Handpiece

# ULTRASONIC SCALER

Refine MaxPiezo7+ Dental LED Ultrasonic Portable Scaler  
Compatible to EMS



Self water supply  
1 Handpiece and tips

Max 1 per Customer

**R6,999**

## Features

\*Multiple function

With different scaler tips, the machine is applicable to implant maintenance, broken file removing, gutta-percha cutting, crown removing, cavity preparation, shoulder preparation, calcifications removing and root planning.

\*Highly efficient root canal irrigation

\*Smart touch panel control

\*Self water supply

Anti-corrosion internal pipeline: Hydrogen peroxide, sodium hypochlorite and other special chemicals are all applicable.

# MAX PIEZO SURGERY III



Includes Handpiece  
& Piezo Tips

**R49,900**

Ultrasonic frequency micro-oscillation of Max Surgery III is an ideal solution for minimally invasive surgery, ultrasonic osteotomy, and more dental diagnosis & treatment.

The Max Surgery Ultrasonic Surgical System has 4 modes: Bone Cutting, Periodontics, Endodontics Treatment, Cleaning and is equipped with various ultrasonic working tips for different applications.

Minimal incision 3.5mmx0.5mm and No damage to soft tissues are its remarkable features. Thus, ultrasonic bone cutter Also, help surgical dentists to accomplish a minimally invasive surgery precisely & effectively. The ultrasonic bone surgery device make dental patients not worry about a slow healing for the trauma of tooth extraction.

Also, it has autoclavable highly efficient handpiece, multi-function pedal for water volume adjustment, mode switching, power adjustment and autoclavable cable to avoid cross-infection.

# MDENT S2 PLUS

SMART 2+ Dental Unit  
with DUWL

Dental Unit Water Line  
Disinfection

**NOW IN STOCK**



**SMART DESIGN**

# SILVER SERIES

**SMART**

**2+**



**NB: Available in Turquoise, Yellow & White**

- ✓ White Finish
- ✓ Upgraded to 4 Bulb LED Lamp
- ✓ Upgraded to 2 Arm Rests
- ✓ 4 Hole Midwest Connections
- ✓ 3 Memory Programs
- ✓ Built-in Clean water System
- ✓ Automatic Cup filler
- ✓ Rotatable Spittoon
- ✓ Built-in LED Curing Light
- ✓ Sanitary Cushion
- ✓ Double articulating headrest
- ✓ One Touch Disinfection-DUWL
- ✓ Free Premium Dr. Stool
- ✓ Free Assistant Stool
- ✓ Built-in LED Ultrasonic Scaler
- ✓ 1 x Free LED Handpieces
- ✓ 1 x Free Slow Set



## LIMITED EDITION

### Built in Aseptic Disinfection System - DUWL

Effectively reduce the Multiplication of Bacteria  
and the accumulation of BIOFILM  
In the WATER LINE

- One Button Key Operation
- Fully Automatic
- Working Indicator Prompt
- Easy to Use
- Peace of Mind
- Covid-19 Enhanced System



**WOW!**

# R89,900

With Built-in Scaler, Built-in Curing Light  
Free Dr. Stool  
Free Fast and Slow Handpieces

# MDENT S3 PLUS

SMART 3+ Dental Unit

Knee Break Folding  
Dental Unit



*Intra Oral Camera &  
17" Monitor FREE !!*

# SILVER SERIES



**NB: Available in Optional Cart System**  
**Choice of colours Available**

**R109,900**  
With Built-in Scaler, Built-in Curing Light  
Free Dr. Stool and Assistant Stool  
Free Fast and Slow Handpieces

- Optional Extra:
- Intra Oral Camera and 17" Monitor
  - Electric Motor with Handpiece
  - Available as Cart or Stand alone
  - Available as Side delivery or Top Delivery Unit

- ✓ White Finish
- ✓ Upgraded to 6 Bulb LED Lamp
- ✓ 4 Hole Midwest Connections
- ✓ 3 Memory Programs
- ✓ Built-in Clean water System
- ✓ Automatic Cup filler
- ✓ Rotatable Spittoon
- ✓ Built-in LED Curing Light
- ✓ Built in LED Scaler
- ✓ Double articulating headrest
- ✓ Free Premium Dr. Stool
- ✓ Free Assistant Stool
- ✓ 1 x Free FAST LED Handpiece
- ✓ 1 x Free Slow Set



**丹特思**  
**Detes**  
DETES MEDICAL SUPPLIES

# MDENT S8 PLUS

SMART 8+ Dental Unit  
with DUWL

Dental Unit Water Line  
Disinfection

# PLATINUM SERIES

SMART

+

8

SMART DESIGN

PREMIUM



Optional 17" IntraOral Camera  
+ Mounting Arm to Unit



NOW IN STOCK



Includes the built-in  
Electric Motor And  
Handpiece



**R99,900**

With Built-in LED Scaler and LED Curing Light  
integrated Electric Dental Motor and handpiece  
FREE Dr Saddle Stool and Assistant Stool

**IN STOCK**

- ✓ Leather upholstery
- ✓ Upgraded to 4 Bulb LED Lamp
- ✓ Upgraded to 2 Arm Rests
- ✓ 4 Hole Midwest Connections
- ✓ 9 Memory Programs
- ✓ Built-in Clean water System
- ✓ Automatic Cup filler
- ✓ Rotatable Spittoon
- ✓ Upgraded Electric Motors
- ✓ Built-in LED Curing Light
- ✓ Built-in LED Ultrasonic Scaler
- ✓ Butterfly Shaped Backrest
- ✓ Double articulating Headrest
- ✓ One Touch Disinfection-DUWL
- ✓ Saddle Dr's Stool
- ✓ Assistant Regular Stool
- ✓ 1 X Free Led Fast Handpieces
- ✓ 1 x Slow Set
- ✓ Built-in Electric Motor – includes FREE Red Ring 1:5 Handpiece worth R15,000

**NB: Available in Sand Colour Only !!**

# TOP 301-2025

ROTARY with DUWL

Dental Unit Water Line  
Disinfection



Includes the built-in  
Electric Motor And  
Handpiece

丹特思®  
**Detes**  
DETES MEDICAL SUPPLIES



High End Chair for the Up-Market Clinic  
Chair Rotates 90 degrees  
Seamless from consult to Examination  
You Clients will love it !!  
Automatic Disinfection Unit  
Optional Nebula Implant Operatory Lamp

# DIAMOND SERIES

Free 17" IntraOral Camera +  
Mounting Arm to Unit



**PRE ORDER**

**R169,900**

With Built-in LED Scaler and LED Curing Light  
integrated Electric Dental Motor and handpiece  
FREE Dr Saddle Stool and Assistant Stool

- ✓ 90 Degree Rotating Chair
- ✓ Knee Break Chair
- ✓ Leather upholstery + Cushion
- ✓ Upgraded to 4 Bulb LED Lamp
- ✓ Optional Nebula implant Lamp
- ✓ Upgraded to 2 Arm Rests
- ✓ 4 Hole Midwest Connections
- ✓ 9 Memory Programs
- ✓ Built-in Clean water System
- ✓ Automatic Cup filler
- ✓ Rotatable Spittoon
- ✓ Central Disinfection System
- ✓ Built-in LED Curing Light
- ✓ Built-in LED Ultrasonic Scaler
- ✓ Double articulating Headrest
- ✓ Modern Dr's Stool
- ✓ Assistant Regular Stool
- ✓ 2 X Free Led Fast Handpieces
- ✓ 1 x Slow Set
- ✓ FREE IntraOral Camera System
- ✓ Built-in Electric Motor –includes  
FREE Red Ring 1:5 Handpiece  
worth R15,000

# MDENT S2+ Summer SUN Package

MDent Promo Surgery Setup (S2 setup)

Upgraded to 4 BULB **LED** Operator Light with Touchless Sensor

Upgraded to

**LIMITED EDITION : 1-Touch DISINFECTION SYSTEM**

1 x Dr Stool

2 x Fast Turbine Handpieces- 3<sup>rd</sup> Generation

1 x Slow Set Handpiece Set

1 x Xray Package Deal (Xray ,Sensor + Apron)

1 x 1-surgery Oil-less Compressor

1 x Built in LED Curing Light

1 x Built in LED Scaler

1 x 1-Surgery Semi wet suction

1 x Adult Forcep Kit(10pcs)

1 x Paedo Forcep kit(7pcs)

5 x Stainless Steel Cassettes

50 x Hand instruments (5 sets)

1 X Free Adaptive Matrix Kit

1 X Rubber Dam Kit + 6 clamps

1 x White Distilled water generator

1 x External Dental Aerosol Suction

1 x Handpiece Oil Adaptor Kit + 6 Oil

1 x Overshoe dispenser KIT+500 overshoes

1 x Single Door UV Cabinet

1 x Room Atomiser



**NB: Available in Turquoise,  
Yellow & White**



**R199 900**  
Free Delivery and Installation in  
Gauteng Only!





### KIDDIES DENTAL UNIT

**FREE MULTI  
MEDIA  
TABLET**

Includes Scaler  
and Curing light



**R89 900**

### DINO + CAT ANIMATED DENTAL UNIT

**FREE MULTI  
MEDIA  
TABLET**



**R99 900**

### FANTASY KIDS DENTAL UNIT



**R109 999**



All Includes regular  
dental Stool,  
curing Light and  
2 FREE Deco Stool !



**NEW**



HANDPIECE OIL  
ADAPTOR + 1 FREE OIL



**R1599**

**New Surgical Handpiece---Bone Surgery**

E type connector  
External water tube

**New!**



**R4 999**

1:1 Blue Ring for Electric Motor  
With Fiber Optic



**R5 999**

MYRICO  
HANDPIECE  
Version 2.0  
ANTI-RETRACTION



**R1999**

1:5 High Speed  
For Electric Motor  
Red Ring  
With Fibre Optic



**R7 999**

Implant Irrigation Sets



Max 5 of each  
per Client  
First 10 Clients

**R299**

**PRO IMPLANT / SURGICAL  
MOTOR SYSTEM – FIBRE OPTIC**

**Get it Free**

Includes 20 :1 implant HP

**NEW**

**Special  
Package  
Deals!**

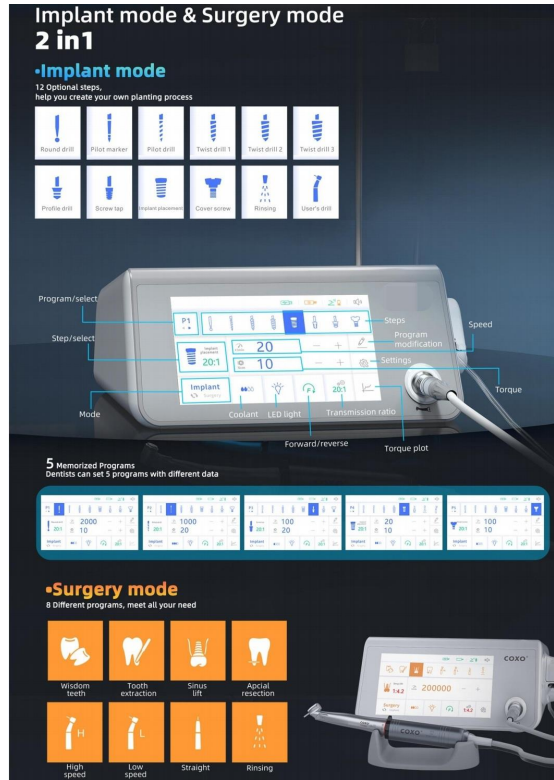


**SOLD OUT**

**MAXIMUM POWER: 130VA  
POWER SUPPLY: AC230V 50/60HZ  
MOTOR SPEED: 300--4000RPM  
ADJUSTABLE TORQUE: 5NCM--80NCM  
WATER SUPPLY VOLUME: 4  
BLOCKS ADJUSTABLE. 150ML/MIN  
LIGHT SOURCE ILLUMINATION: 30000LUX  
MOTOR: SURGICAL BRUSHLESS MOTOR  
VOLUME(CM): 42X38X26CM  
WEIGHT(KG)/PCS: 5.5KG ,**

**Includes implant 20:1 handpiece!  
T's and C's Apply**

**PRO-IMPLANT PLUS  
2-IN 1 ELECTRICAL MOTOR  
PLUS SURGICAL MOTOR  
EXTERNAL IRRIGATION**



**R39 900**

**Purchases this month get  
a FREE IMPLANT 20:1 Handpiece  
A FREE Surgical 1:4.2 Red Ring  
T's and C's Apply**

**SURGICAL IMPLANT  
HANDPIECE FOR  
ELECTRIC MOTOR  
20:1**

**NEW**



**SURGICAL HANDPIECE FOR  
ELECTRIC MOTOR  
COMPATIBLE TO MOST  
SURGICAL UNITS  
INCLUDING NSK  
HIGH QUALITY AND  
EXCEPTIONAL DESIGN  
EXTERNAL IRRIGATION  
FIBRE OPTIC LIGHT GUIDE  
USE WITH FIBRE OPTIC  
ENHANCED ELECTRIC  
SURGICAL UNIT**

**R6 999**

Non Fibre Optic

**R7 999**

Fibre Optic

**SURGICAL Fibre Optic  
HANDPIECE FOR  
ELECTRIC MOTOR**

**1:1**

**NEW**



**SURGICAL HANDPIECE FOR  
ELECTRIC MOTOR  
COMPATIBLE TO MOST  
SURGICAL UNITS  
HIGH QUALITY AND  
EXCEPTIONAL DESIGN  
FIBRE OPTIC LIGHT GUIDE  
USE WITH FIBRE OPTIC  
ENHANCED ELECTRIC  
SURGICAL UNIT**

**R8 999**

INTERNAL / EXTERNAL  
IRRIGATION

## PREMIUM DR STOOL



**NOTICE:**  
These are Premium Stools With  
Metal Legs and  
Premium Castors

**Colours:**  
Turquoise, Dark Blue , Yellow & White

**DON'T  
MISS  
OUT!**

**R3,999**

## PREMIUM ASSISTANT STOOL



**Various Colours**  
**Max 1 per Customer**  
Last few Remaining  
Get Yours !!!

**DON'T  
MISS  
OUT!**

**R2,999**

## PREMIUM DELUXE DR SADDLE STOOL



**LIMITED EDITION**  
**SADDLE DESIGN**  
**ERGONOMIC**  
**COMFORTABLE**  
**STYLISH**

**Colours:**  
Lime Green & White

**DON'T  
MISS  
OUT!**

**R4,999**

## SMART DECO TOOTH STOOLS



**SOLD OUT**

**Purchase The Premium Deluxe Dr. Saddle Stool And The Premium Assistant  
Stool & Receive A FREE Smart Deco Stool**  
**No Choice On Colours For Smart DECO Stool**

## TOOTH SHAPED SOAP DISPENSER



**SOLD OUT**



**Purchase The Dr. And An Assistant Stool & Receive  
A Free Tooth Shaped Soap Dispenser**

**ETCHANT 37%**  
**(12X 2ml SYRINGES)**



**CRAZY DEAL**

Expires April 2025

**R699**

**DENFIL CAPSULES**

**SHADE A1, A3**



Expires Jan 2025

**CRAZY DEAL**

Pack of 20's  
Double packed  
Limit to 1

**R399**

**SPACER TEMP FILLING**



**CRAZY DEAL**

Expires Jan 2026  
BLUE / or YELLOW

**R399**

**U-BOND 7<sup>TH</sup> GEN BONDING AGENT**

Self Etching Light Cured Adhesive



**CRAZY DEAL**

Expires March 2025  
Max 1 per customer

**R599**

**BC PLUS 5<sup>TH</sup> GEN BONDING AGENT**

Expires April 2025



**CRAZY DEAL**

Max 1 per customer

**R499**

**Care Crown & Bridge**

**SHADE A2**

Expires April 2025

**R799**



**U-BOND Ortho Bond**

Expires March 2026

**R 1999**



<https://youtu.be/kGtqo1UyFU4>

Vericom U-Bond Ortho Light Cure Adhesive for attaching orthodontic bracket. It is designed to attach ceramic & metal bracket to a tooth, and its characteristic of color change after light-cure provides easy removal of remaining resin around the tooth.



**ECO-S Fissure sealing KIT**

Expires April 2025

**R 899**



Light-cured dental material designed for sealing the enamel pit and fissure of teeth for the prevention of caries. Has good properties like shear bond strength, micro-leakage and wear resistance.

Has an appropriate viscosity, to enable the sealant to penetrate the depths of pits.

**ORTHO PRODUCTS TO MAKE YOU SMILE**

## DUAL CORE

Core Build Up material Light Cured initiated and Dark cure reaction to completion



**R1599** 2X SYRINGE

## U-Cem Premium Cement 2 x 9g Syringes

Your one cement for every indication, use on metal, porcelain, ceramic and zirconia

**SOLD OUT**



Purchase  
**VERICOM  
DUAL CORE**

And get  
1x PACK of  
Assorted  
FIBRE POSTS

**FREE**

**FREE**



**CLEARANCE SALE ON ALL VERICOM PRODUCTS !!**

## WELL ROOT ST



**R899** 2g syringe

Premixed Calcium Aluminosilicate  
Root canal sealer paste – Injectable  
Expires April 2025

## WELL ROOT PT



ready to use, premixed, bioceramic  
paste developed for pulp capping,  
permanent root canal repair, and  
surgical applications. Expires April  
2025

**R 1999** (0.25g x10)

## WELL PASTE



2g syringe

Water Based Calcium Hydroxide Paste  
with Barium Sulphate – Injectable  
Expired

**CRAZY  
DEAL**

**SOLD OUT**

Limited to 1  
per customer  
**R 999**

## WELL PEX



2g syringe

**R 999**  
Oil Based Calcium Hydroxide Paste  
with Iodoform Injectable  
Expires April 2026

Limited to 1  
per customer

## NITRILE GLOVES



**CRAZY  
DEAL**

**R79,90**

Small, Medium, Large  
while stocks last  
Limited to 10 per  
Customer

## DISPOSABLE MASKS (50'S)



**R39,90**

Max 20 per customer

**CRAZY  
DEAL**

## Bur Brush

Pegasus Type Bur,  
Instrument and  
Forcep Cleaning Brush



**CRAZY  
DEAL**

**R299**

Max 2 per customer

## XYLOTOX - E80A 1.8ml Anaesthetics



**CRAZY  
DEAL**

**R879,90**

Expiry Feb 2026

## PLASTIC IMPRESSION TRAYS



**CRAZY  
DEAL**

**R 39.90**

SET OF 2

SMALL, MEDIUM  
OR LARGE

## 550ml LUBRICATING HANDPIECE OIL



**CRAZY  
DEAL**

**R 399.90**

Max 6 per customer

WHAT'S  
NEW

# Endodontic Extravaganza



Sonic Irrigator + 30 Tips  
Flexible polycarb tips

**R2,900**



Ultrasonic Activator + Tips

**R5,900**

25 capsules of the Dual Purpose  
Patented  
Twin Klean Irrigating Solution



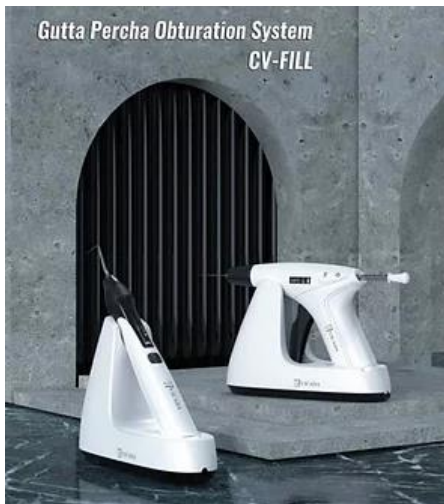
**R199**



New version  
Integrated Endo  
Motor + Apex Locator

**R11,900**

**2 in 1** Buy the Endo Motor With Apex  
Locator and receive  
**FREE SONIC IRRIGATOR**  
With 30 Tips



Warm GP Obturation  
System

**R9,900**



Root canal irrigation and  
suction system

**R9,900**



Endo File Retrieval System

**R5,900**



## Twin Kleen Single Step Root Canal Disinfectant

Twin Kleen is an additive to endodontic irrigating solutions For all endodontic procedure during root canal instrumentation and as a final rinse solution.



**R199** 25's

Compatible with sodium hypochlorite

# Endodontic

**WHILE STOCKS LAST!**

# Extravaganza

## GP CUTTER + TIPS



**R799**

## V-TAPER FILES



**R699**

## M3L LARGE TAPER GOLD FILES



**R599**

## M3L PLATINUM FILES



**R599**



**PURCHASE**

**Xray  
Sensor**

**CRAZY  
DEAL**

HDR 500 - Size #1



**R 23,900**

Includes :  
Regular Single user  
version software  
**Great Deal !!**

HDR 600 - Size #2



**R 26,900**



**INTRA ORAL  
CAMERA**



USB connection  
High Quality Intra Oral Photos  
Optional Network/ twain  
Version

**R4 999**

**X-RAY  
LEAD APRON**



**R4 999**

**X-RAY  
THYROID COLLAR**



**R1999**

# MOBILE SUCTION SOLUTIONS

European Design AND Quality

**12 Month Warranty**



Made in  
*Türkiye*

CHOOSE FROM 3 DIFFERENT DESIGNS



PORTABLE MOBILE SUCTION  
**AUTOMATIC DRAIN FUNCTION**

**R33 900**



PORTABLE MOBILE SUCTION  
**AUTOMATIC DRAIN FUNCTION**  
**+ CERAMIC SPITTOON**  
**+ WATER RINSE DISPENSOR**

**R35 900**



PORTABLE  
MOBILE  
SUCTION  
**MANUAL  
DRAIN  
FUNCTION**

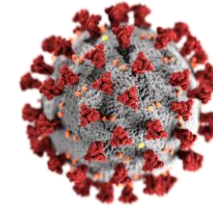


**R33 900**

ROOM ATOMISER  
(360 DEGREES)



ANION  
DISINFECTANT  
SPRAY GUN



**A CLEAN  
WORK AREA  
IS A  
SAFE  
WORK AREA**

**VIRUS  BUSTERS**



**Purchase any EXTERNAL DENTAL SUCTION and get the  
ROOM ATOMISER or ANION DISINFECTANT GUN FREE**

**Purchase the UV CABINET and get  
The UV LAMP & OZONATOR FREE**

EXTERNAL  
DENTAL  
SUCTION  
v.1.0



**R8 900**

EXTERNAL  
DENTAL  
SUCTION  
v.2.0  
LCD



**R9 900**



**AMAZING  
DEAL**



**R 5 999**

# ENDO IRRIGATING NEEDLES



27G / 30G Box of 100's

**R299**

Maximum 3 per Customer

## GATES GLIDDEN ENDO DRILLS



#1 #2 #3 #4 #5 #6

**R399** 6 assorted sizes

## ENDO H FILES



**R299** 6 assorted sizes

## ENDO K FILES



**R299** 6 assorted sizes

**SURGICAL  
BLADES**



#10, #15  
#21, #22

**R 4.90**

**DISPOSABLE  
SYRINGES 3ml**



**R 1.99**

**DENTAL GINGIVAL  
RETRACTION CORD**



**R 199**

**FIBRE POST  
REFILLS ONLY**

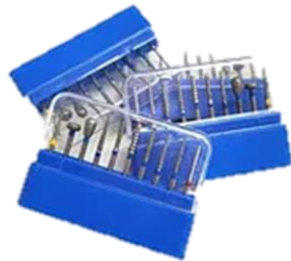


**R 299** 20 Pcs

**AUTOCLAVABLE  
BUR HOLDER**



16 HOLE  
SETTING



Buy 5 get  
1 FREE  
Bur Kit

**R 299**

**SILICONE RUBBER  
MOUTH PROPS**



**R 299 each**

**AUTOCLAVABLE  
ULTRASONIC SCALING KIT**



**R2 999**

**NEW MODEL NP CLASS**  
**STEAM STERILIZER**

**R29 900**



**STEAM STERILIZER  
LOG PRINTER**

**REGULAR N CLASS**  
**STEAM STERILIZER**

**R19 900**



**Manual Water Filling  
FREE WATER DISTILLER**

**REGULAR NM CLASS**  
**STEAM STERILIZER**

**R27 900**



**Automatic Water Filling  
FREE WATER DISTILLER**

**WATER DISTILLER**  
**(WHITE)**



**R1999**

**1<sup>st</sup> 5 customers  
1 per customer**

**Buy the Combo Safety Deal ! R12900**

**WATER DISTILLERS (WHITE)**



**+**

**ULTRASONIC CLEANER**



**+**

**INSTRUMENT SEALING MACHINE**



**+**

**75 mm SEAL ROLL**



**18L B CLASS AUTOCLAVE**



**R59,900**

Free White Distiller  
AND Ultrasonic Bath

**DON'T  
MISS  
OUT!**

**23L B CLASS AUTOCLAVE**



**R69,900**

Free White Distiller  
AND Ultrasonic Bath

**10L HAETMED B CLASS  
A50B AUTOCLAVE**



**SUPER FAST CYCLE**

**R159 900**

- +FREE DISTILLER (STAINLESS STEEL)
- +FREE SEALING MACHINE
- +FREE ULTRASONIC BATH
- +FREE 75MM, 100MM & 200MM SEALING ROLLS

**PREMIUM  
WATER DISTILLER  
(STAINLESS STEEL)**



**R4 999**

**INSTRUMENT  
SEALING MACHINE**

**DON'T  
MISS  
OUT!**



**R5 999**

**ULTRASONIC BATH**



**R4 999**

3.7L

**R7 999**

4.9L

**STERILIZATION ROLLS**



- 50mm X 200M - **R799**
- 75mm X 200M - **R999**
- 100mm X 200M - **R1 199**
- 200mm X 200M - **R1 999**

# FORCEPS

# R299

Buy 10 AND get 2 Absolutely FREE !!

LOWER PREMOLAR

**F13**



LOWER MOLAR

**F22**



LOWER ROOTS

**F74**



LOWER ANTERIOR & PREMOLAR

**F75**



LOWER COWHORN

**F86A/  
F86C**



UPPER ANTERIOR

**F1**



UPPER CANINE & PREMOLAR

**F7**



UPPER MOLAR (RIGHT)

**F17**



UPPER MOLAR (LEFT)

**F18**



UPPER MOLAR UNIVERSAL

**F18A**



UPPER ROOTS

**F51/  
51L**



UPPER MOLAR COWHORN (RIGHT)

**F89**



UPPER MOLAR COWHORN (LEFT)

**F90**



PAEDO LOWER MOLAR UNIVERSAL

**F6**



PAEDO LOWER INCISOR

**F7**



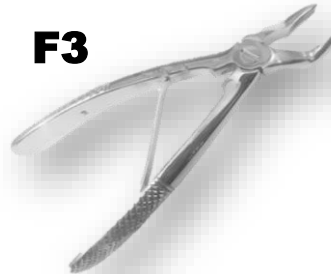
PAEDO LOWER ANTERIOR

**F162**



PAEDO UPPER MOLAR UNIVERSAL

**F3**



PAEDO UPPER ANTERIOR

**F39**



PAEDO UPPER INCISOR

**F139**





# ELEVATORS

# R299

WARWICK JAMES  
(LEFT TO RIGHT)



WARWICK JAMES  
(RIGHT TO LEFT)



WARWICK JAMES  
(STRAIGHT)



Buy the Right and Left and get the Straight FREE !

COUPLAND ELEVATOR  
(MEDIUM)



COUPLAND ELEVATOR  
(SMALL)



COUPLAND ELEVATOR  
(LARGE)



Buy the Medium and Small and get Large FREE !



CRYERS LEFT  
AND RIGHT

LONDON HOSPITAL RIGHT AND LEFT  
LONDON HOSPITAL STRAIGHT



Buy the Right and Left and get the Straight FREE !

# HAND INSTRUMENTS

# R195

PLUGGER



FLAT PLASTIC



EXPLORER



SPATULA



EXCAVATOR



BALL BURNISHER



**BUY 10 AND GET 2 FREE - LIMITED TO 30 HAND INSTRUMENTS**

THYMOSIN



GINGIVAL MARGIN  
TRIMMER



AMALGAM CARVER



PERIODONTAL PROBE



CORD PACKER



MIRROR HANDLE



## CROWN REMOVER



Double  
Sided Only !

**R 1450**

## SYRINGE



HINGE TYPE **R299**

Limited to 5 per customer

## WEIDER RETRACTOR



**R999**

## ATRAUMATIC EXTRACTION FORCEPS



**R2 999**

## ROOT LUXATING KIT



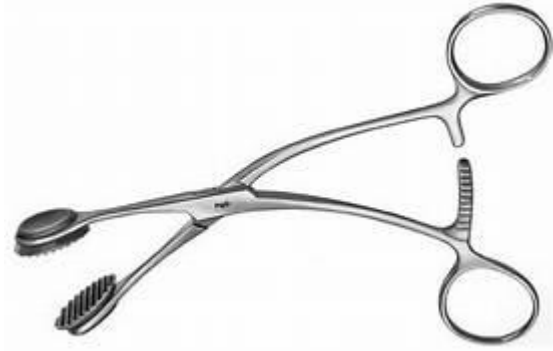
**R1 999**

## AMALGAM CARRIER



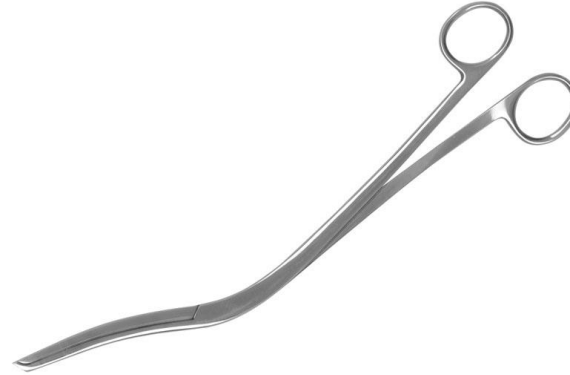
**R 149**

**TONGUE FORCEPS**



**R 299**

**CHEATLE FORCEPS**



**R299**

**CASSETTE**

**STAINLESS STEEL 10PC SETTING**

**R499**



**Limited to 10 per customer**

**COPPER  
TISSUE RETRACTOR  
BENDABLE**



**R 299**

**BONE CURETTE LARGE**



**R 299**

**BONE CURETTE SMALL**



**R299**

# PROSTHETICS

WILLES GUAGE



R399

# PROSTHETICS

FOX PLATE



R399

CURVED SURGICAL  
GUM SCISSOR



R299

Limited to 3 per customer Only !!

PERIOSTEAL ELEVATOR



R299

COTTON PLEDGET  
DISPENSOR



R399

ORTHO WIRE CUTTER



R799

ORTHO DISTAL END CUTTER



R 1299

**ARTICUATING PAPER TWEEZER**



**R399**

**DENTAL SCISSOR  
PRECISION CURVED**



**R399**

**DENTAL SCISSOR  
PRECISION STRAIGHT**



**R399**

**Limited to 3 per customer Only !!**

**CUSHINGS SCALER**



**R199**

**SICKLE SCALER**



**R199**

**LIGATURE SCISSOR**



**R399**

**TOFFELMIRE AMTRIX  
BAND HOLDER -ADULT**



**R359**

**TOFFELMIRE AMTRIX  
BAND HOLDER -CHILD**



**R399**

**STAINLESS STEEL  
CHEEK RETRACTOR**



**R399**

**STAINLESS STEEL  
GALLIPOT**



**1 oz - R299**  
**2 oz - R399**

**BONE SCOOP FOR BONE  
AUGMENTATION**



**R399**

**10 Pc COMPOSITE FILLING &  
SCULPTING KITS**



**R1499**

High Heat Silicone  
Strong Teflon coated  
High Quality Product  
Stainless Steel

# SURGICAL INSTRUMENTS

CASTROVIEJO NEEDLE  
HOLDER OR SCISSOR



**R999**

MAYO HEGAR  
NEEDLE HOLDER



**R399**

AUSTIN TISSUE  
RETRACTOR



**R399**

BONE RONGEUR



**R699**

TISSUE FORCEP



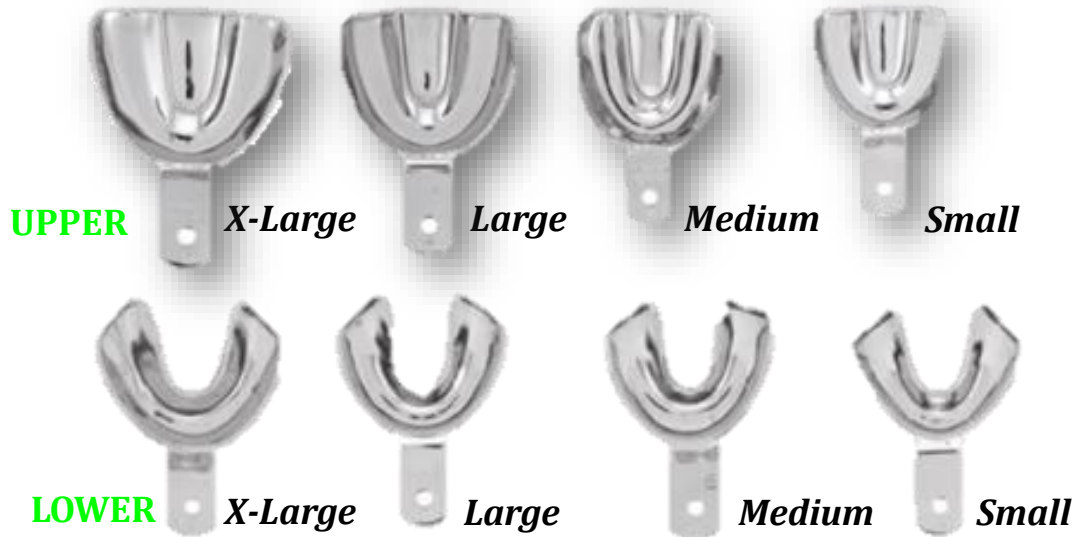
**R399**

SCALPEL HANDLE



**R299**

## IMPRESSION TRAYS DENTURE SOLID



**R199** EACH

## IMPRESSION TRAYS PERFORATED



**R199** EACH